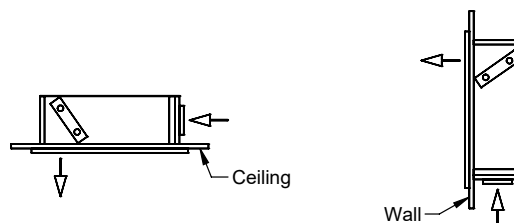
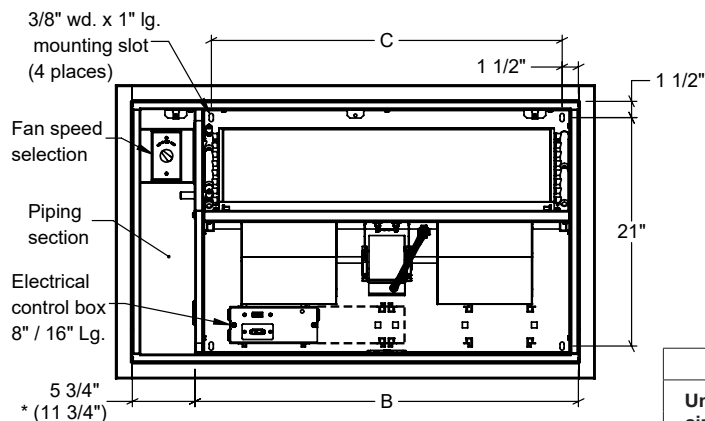
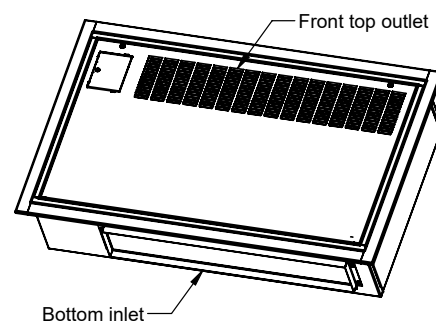
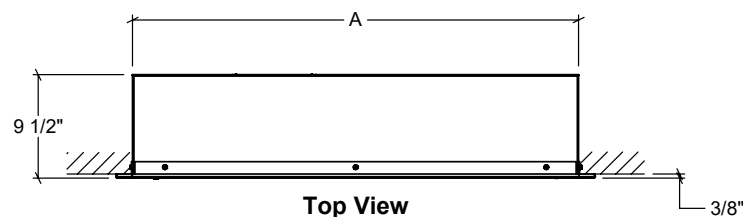


Rittling Cabinet Unit Heater

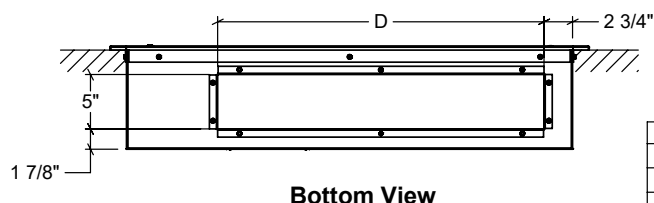
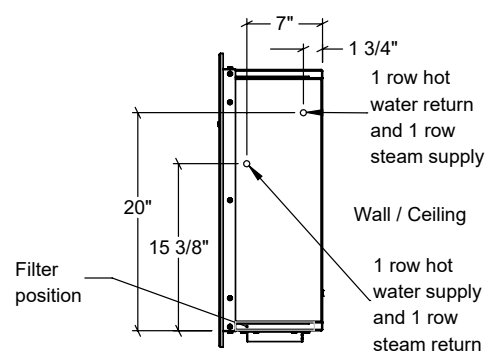
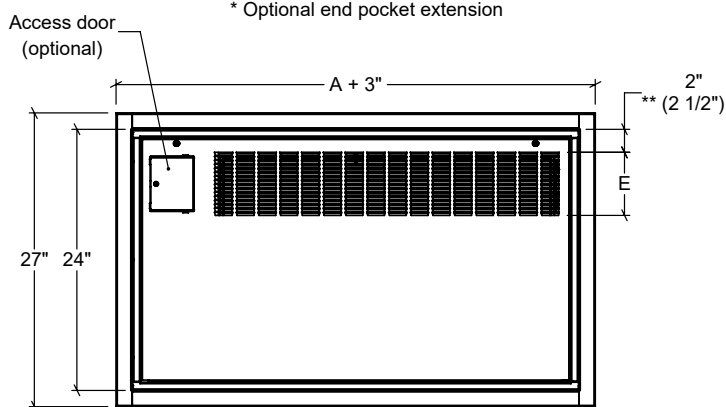
Submittal Data

Model: RCW-380-Recessed

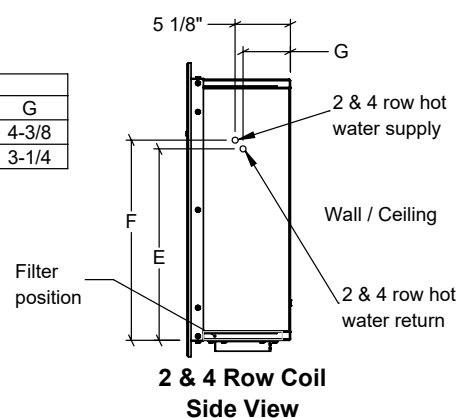
Dimensions and Data



| Dimensional Data | | | | | | | | |
|------------------|------|---------|--------|--------|---------|---|-------------|---|
| Unit size | A | | B | C | Louvres | | **Bargrille | |
| | Std. | *6" Ext | | | D | E | D | E |
| 03 | 35 | 41 | 29-1/4 | 26-1/4 | 26 | 6 | 24 | 5 |



| Dimensional data | | | |
|------------------|--------|--------|-------|
| Coil | E | F | G |
| 2 Row | 17-5/8 | 18-3/8 | 4-3/8 |
| 4 Row | 17-7/8 | 19-1/8 | 3-1/4 |



Notes:

- 1, 2, and 4 row coil supply and return connections are 1/2" nominal (5/8" OD) on all sizes
- Unit shown with left hand piping connections
- Right hand piping connections available as an option
- Piping hand determined when facing the air outlet
- All listed dimensions are approximate and are subject to change without notice
- Modifications to the product specifications must be accepted by Zehnder at its base office
- See www.zehnder-rittling.com for any recent updates or changes