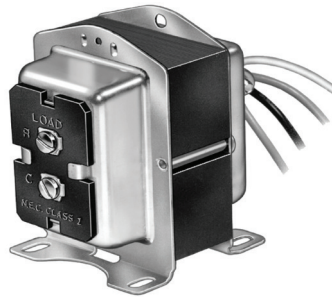


Transformer 120V/24V



Features

- ° Rated at 40 VA
- ° Color-coded leadwires for primary connections and screw terminals for secondary connections, fixed 1/4" (6 mm) male quick-connects or color-coded leadwires for both primary and secondary are standard.



Electrical ratings

Output rating at 100% power factor ^a	Primary input voltage (60 hHz)	Secondary output voltage	
		Open circuit	At rated power output
40 VA	120V	27.0	24.0

^a Refers to regulation curve

Wiring connections

- ° Primary: 9" (230 mm) leadwires
- ° Secondary: screw terminals

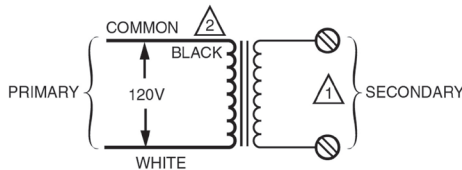
Overcurrent protection

- ° Inherent

Approvals

- ° Underwriters Laboratories, Inc. listed
 Æ File no. E14881, Guide No. XOKV
 Æ Conforms to Standard UL 1585
- ° National Electrical Code
 Æ Class 2 not wet, Class 3 wet

Wiring schematic



Secondary connections are screw terminals

Black is common with respect to the transformer winding only and not the external circuit

Transformer dimensions in. (mm)

Model	A	B	C	D
11100000216A	3 (76)	2 (51)	3-1/8 (79)	1-9/16 (40)

Plate or outlet box mounted at clamp on end bell

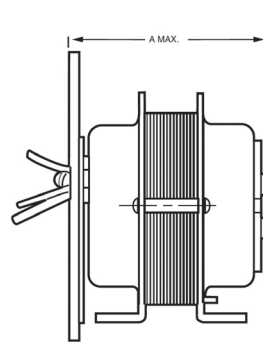
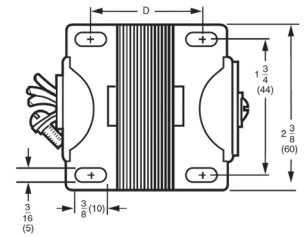
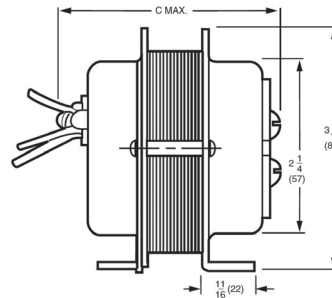
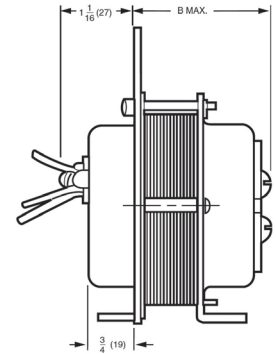


Plate mounted at the laminations



Foot mounted

Regulation Curve

