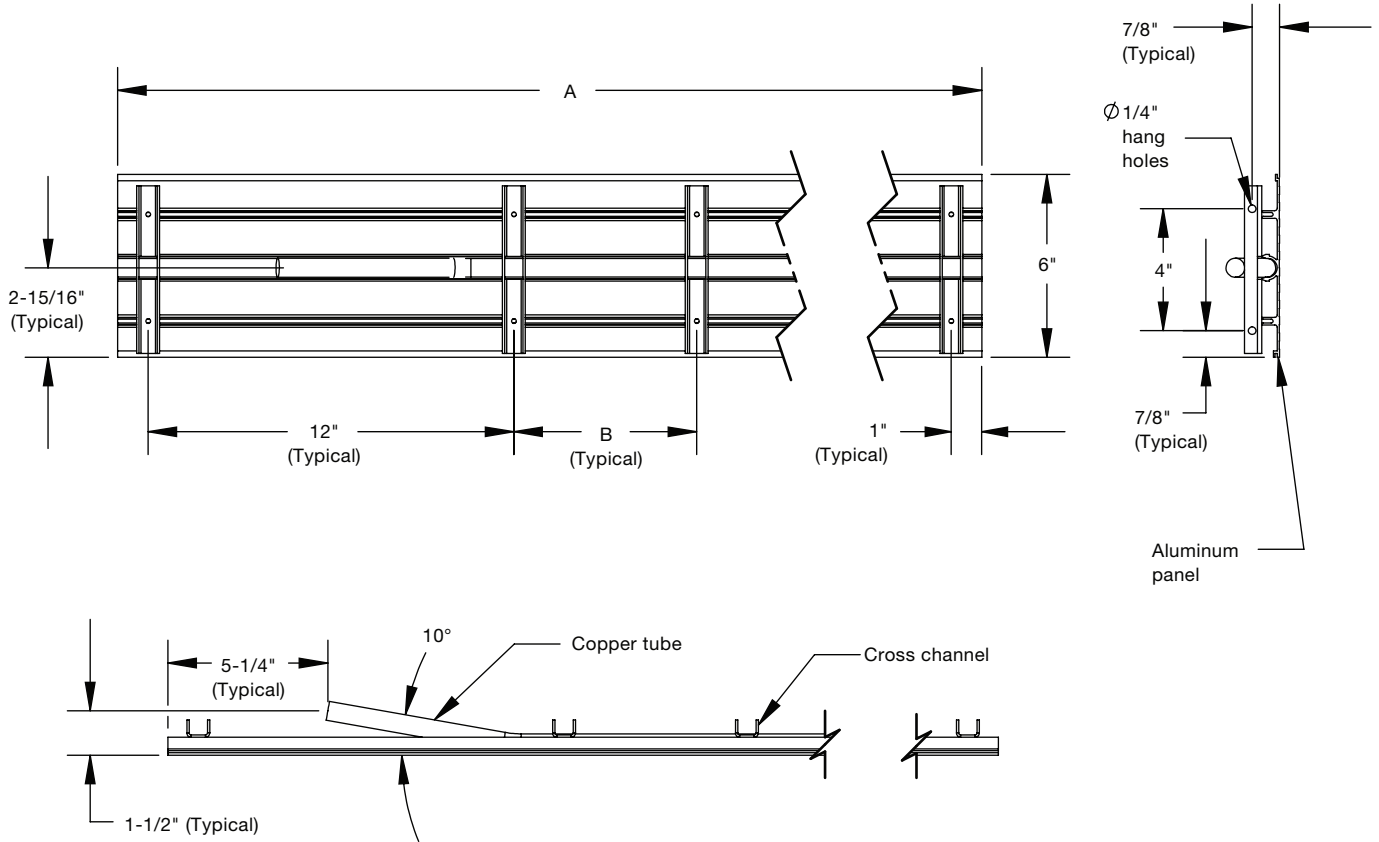


# Linear Radiant Ceiling Panel

6" wide panel, 1 tube (1/2" nominal, Type L copper)

**zehnder** Rittling



A	4'	5'	6'	7'	8'	9'	10'	11'	12'	13'	14'	15'	16'
B	N/A	17"	23"	29"	23.3"	27.3"	31.3"	26.5"	29.5"	26"	28.4"	25.7"	27.7"
C	4	5	5	5	6	6	6	7	7	8	8	9	9

C = Number of cross channels

All tolerances  $\pm 1/16"$  and angular tolerance  $\pm 1$  degree



CONTRACTOR \_\_\_\_\_  
 ARCHITECT \_\_\_\_\_  
 ENGINEER \_\_\_\_\_  
 REPRESENTATIVE \_\_\_\_\_  
 LOCATION \_\_\_\_\_

ZEHNDER RITTLING  
 100 RITTLING BLVD. • BUFFALO, NY USA 14220

JOB:

MODEL: **6" wide panel, 1 tube**

DATE: **July 2014**

DWG.NO.: