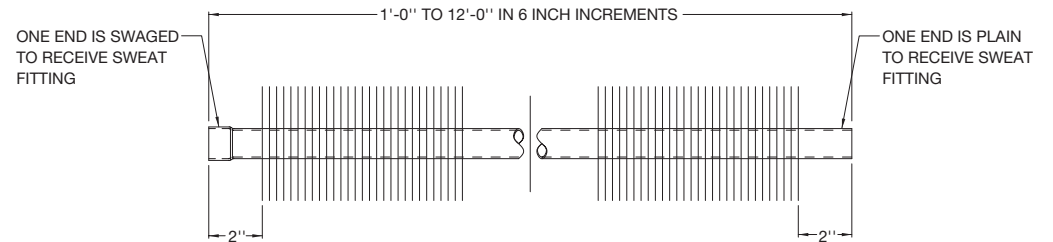
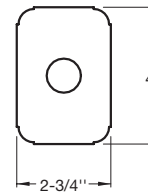
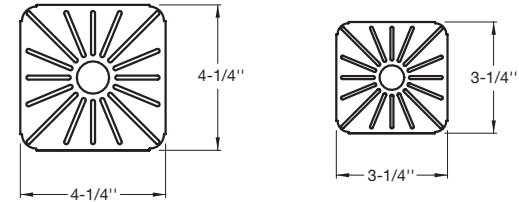


ALUMINUM FIN SIZES

MODEL	TUBE SIZE (OD)		TUBE MATERIAL	FIN SIZE	FIN MATERIAL	FINS/FT
	NOMINAL	ACTUAL				
3/4C, 2-3/4 X 4, 32	3/4"	7/8" OD	COPPER	2-3/4" X 4"	ALUMINUM	32
3/4C, 2-3/4 X 4, 40						40
3/4C, 2-3/4 X 4, 48						48
3/4C, 3-1/4, 32	3/4"	7/8" OD	COPPER	3-1/4" X 3-1/4"	ALUMINUM	32
3/4C, 3-1/4, 40						40
3/4C, 3-1/4, 48						48
3/4C, 4-1/4, 32	3/4"	7/8" OD	COPPER	4-1/4" X 4-1/4"	ALUMINUM	32
3/4C, 4-1/4, 40						40
3/4C, 4-1/4, 48						48
1C, 2-3/4 X 4, 32	1"	1-1/8" OD	COPPER	2-3/4" X 4"	ALUMINUM	32
1C, 2-3/4 X 4, 40						40
1C, 2-3/4 X 4, 48						48
1C, 3-1/4, 32	1"	1-1/8" OD	COPPER	3-1/4" X 3-1/4"	ALUMINUM	32
1C, 3-1/4, 40						40
1C, 3-1/4, 48						48
1C, 4-1/4, 32	1"	1-1/8" OD	COPPER	4-1/4" X 4-1/4"	ALUMINUM	32
1C, 4-1/4, 40						40
1C, 4-1/4, 48						48
1-1/4C, 2-3/4 X 4, 32	1-1/4"	1-3/8" OD	COPPER	2-3/4" X 4"	ALUMINUM	32
1-1/4C, 2-3/4 X 4, 40						40
1-1/4C, 2-3/4 X 4, 48						48
1-1/4C, 3-1/4, 32	1-1/4"	1-3/8" OD	COPPER	3-1/4" X 3-1/4"	ALUMINUM	32
1-1/4C, 3-1/4, 40						40
1-1/4C, 3-1/4, 48						48
1-1/4C, 4-1/4, 32	1-1/4"	1-3/8" OD	COPPER	4-1/4" X 4-1/4"	ALUMINUM	32
1-1/4C, 4-1/4, 40						40
1-1/4C, 4-1/4, 48						48



NOTES:
 1) FIN THICKNESS IS 0.016 INCH EXCEPT AS NOTED
 2) COPPERMATERIAL TYPE C122



CONTRACTOR _____ ELEMENT _____
 ARCHITECT _____ RATING _____ BTU _____ A.W.T. _____ E.A.T. _____
 ENGINEER _____
 REPRESENTATIVE _____
 LOCATION _____

ZEHNDER RITTLING
 100 RITTLING BLVD. • BUFFALO, NY USA 14220

JOB:

ENCLOSURE MODEL: **ALUMINUM ELEMENT**

DATE: **March 2014**

DWG.NO.: ALUMINUM ELEMENT