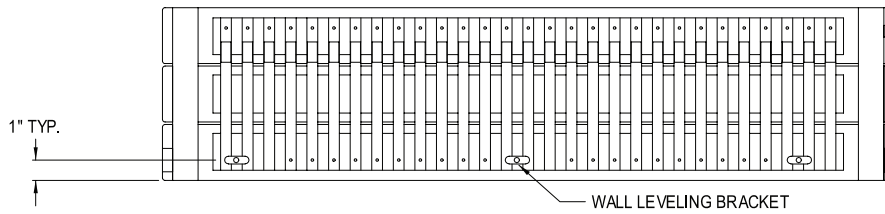


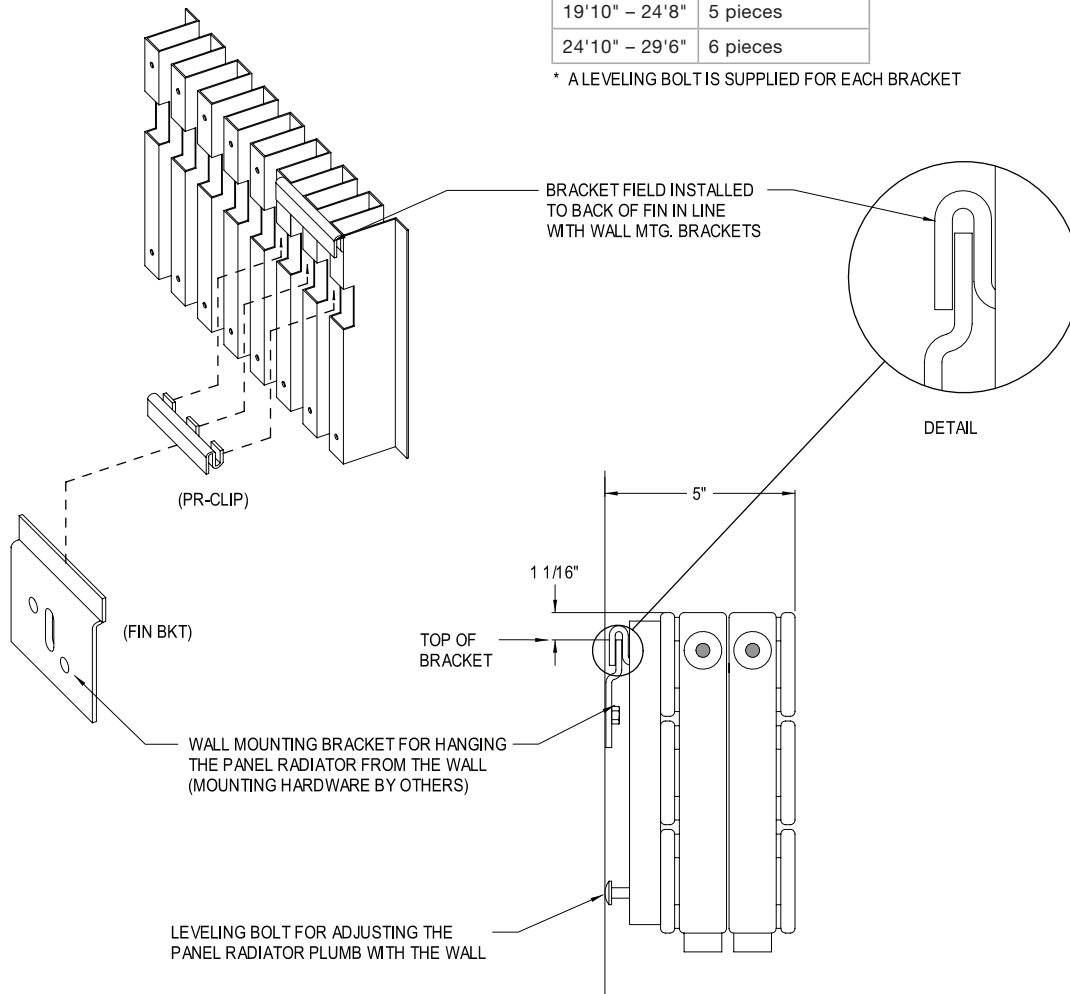
Rittling Steel Panel Radiator

PR3F Wall Mount (Back View), Typical Bracket Installation



Panel length	Qty. of brackets
2'0" - 5'0"	2 pieces
5'2" - 11'6"	3 pieces
11'8" - 19'8"	4 pieces
19'10" - 24'8"	5 pieces
24'10" - 29'6"	6 pieces

* A LEVELING BOLT IS SUPPLIED FOR EACH BRACKET



Contractor _____

Architect _____

Engineer _____

Representative _____

Location _____

zehnder
Rittling

BUFFALO, NY USA

TITLE

ZR_PanRad_PR3F_WallMount

DRAWING NUMBER

April 1, 2012